

# CHES COMMUNITY CONNECTIONS PROGRAM

CARE TEAMS

2022-23

We are excited to launch year two of the Community Connections Program! In keeping with our core value of **Christian Community**, we look forward to the connections this program will facilitate and the opportunity to serve together to invest in CHES Christian School.



CHES PARENTS ORGANIZATION



TEACHER SUPPORT TEAM



HOSPITALITY TEAM



BUILDING TEAM



CAMPUS TEAM

CARE TEAMS

## What is the Community Connections Program?

Community Connections is a program comprised of Care Teams that exist to support various needs of the school. Each CHES family has chosen the educational partnership with CHES, which includes this volunteer requirement. At CHES, we aim to teach students ownership over their school and education. As parents, we have the opportunity to model this through participation on a Care Team.

FAQ >>>

Other questions? [HKempe@CHESChristian.com](mailto:HKempe@CHESChristian.com)



# CHESS COMMUNITY CONNECTIONS PROGRAM

CARE TEAMS  
2022-23

## How many hours am I required to serve?

There is not an hourly requirement. Instead, families can choose from:

- Zones
- Events
- Buy Out

You must make your selection by September 9th, 2022. Depending on which Care Team you join, you will be responsible for a specific zone of the school or you will commit to serving at specific events. The sign-up spreadsheet outlines the responsibilities of each of these roles so that you can make an informed decision.

## Can I serve on two teams?

Yes! We know that your interests or skill sets may be valuable on more than one team. We are thankful for your heart of service! Please feel free to sign up for more than one team, keeping in mind that we will rely on you to fulfill your commitment.

## Can my spouse and I serve on two different teams?

Yes! Again, thank you for your heart of service!

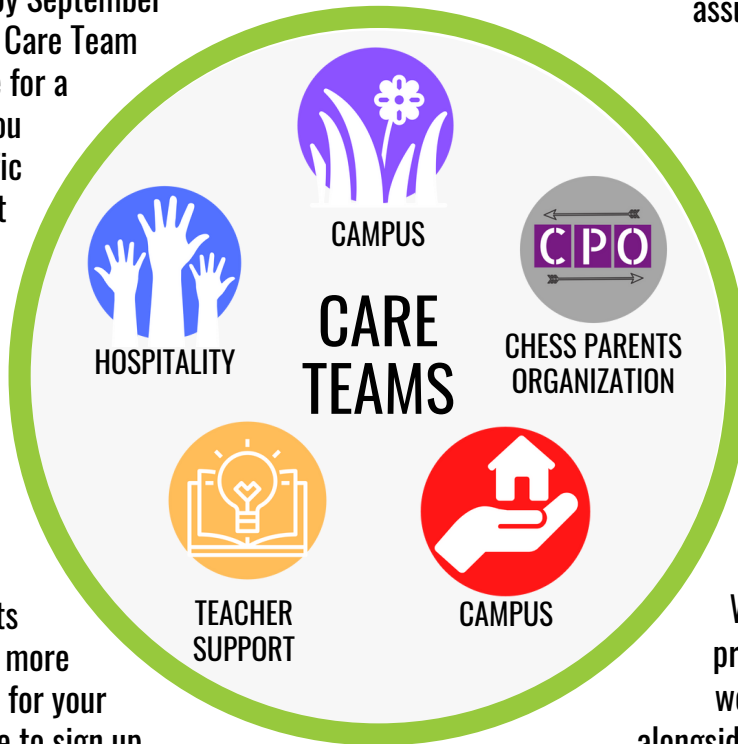
## What if the team I want to join is full?

Please email Hannah Kempe at [HKempe@CHESSChristian.com](mailto:HKempe@CHESSChristian.com).

## What if I can't/don't want to serve?

A buy-out option of \$500 per family is available. If you would like to use the buy-out option, please complete the form at the link below. If you sign up for a role (either a zone or an event) and do not follow through on your commitment, we will assume that you have changed your mind and are choosing the buy out option. Your account will be charged \$500 on October 21, 2022.

[Buy Out Option](#)



## Can my kids serve with me?

We love to see our students take pride in their school! Students are welcome and encouraged to serve alongside their families in roles that are safe and appropriate for their age. If your student is with you while you are serving, they must stay with you or be in aftercare when available. Students may not be unsupervised in the commons, gym, playground, etc.

## What are my next steps?

[Sign Up Now!](#)



[Access the spreadsheet here!](#)

After you have signed up for a team, your team lead will contact you with information about your next steps!