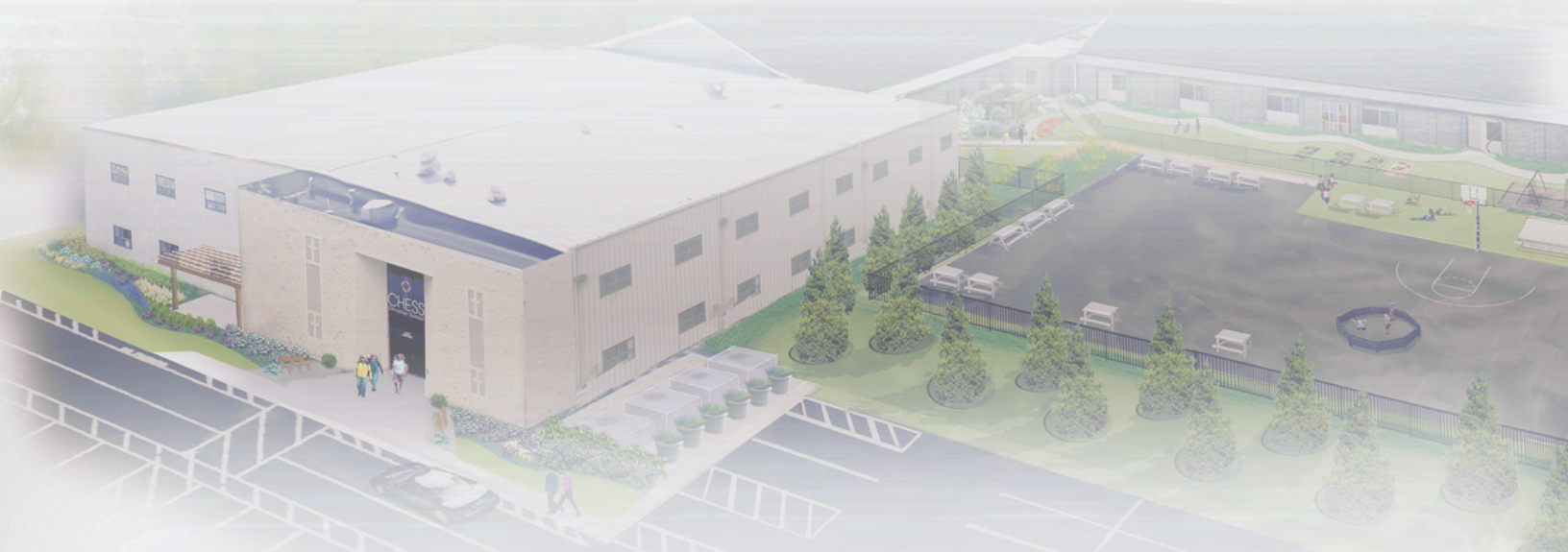




YOUR GUIDE TO CHESS CHRISTIAN SCHOOL

**Helping Students Discover Who
God Created Them to Be
and Empowering Them to
Impact the World for Christ**





A Message From Our Co-Founder & CEO

As a parent of four CHESS graduates, I've come to understand the importance of tailoring educational and co-curricular opportunities to meet the unique, God-given gifts and abilities of each child. At CHESS, learning becomes a transformative experience as students discover not only how they learn, but also why learning matters. They are equipped to thrive as lifelong learners in an ever-changing world.

CHESS fosters an environment of passionate discipleship through its hybrid learning model, which brings together the school, the family, and the church in an interdependent partnership. Rooted in the principles of Deuteronomy 6, CHESS upholds the family's role as the primary educators of their children while providing the support of highly qualified teachers. These educators guide students through a challenging curriculum that integrates a biblical worldview. As a nondenominational school, CHESS is enriched by the diversity of families from over 100 churches, creating a vibrant, Christ-centered community.

This approach makes CHESS an ideal choice for families seeking flexibility in their schedules and educational choices. It also serves those who wish to actively engage in and support their children's learning journey. At CHESS, students grow in a safe and supportive environment where Christian values are woven into every aspect of the school. Here, they are prepared to navigate the complexities of the 21st-century marketplace with confidence and faith.

From the curiosity of a 2-year-old to the transformation of a high school senior, CHESS students experience a nurturing environment that reflects the truth of Ephesians 2:10: "For we are God's workmanship, created in Christ Jesus to do good works, which God prepared in advance for us to do."

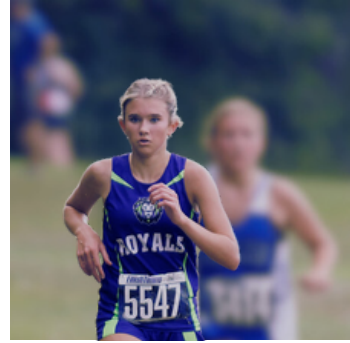
We invite you to prayerfully consider if CHESS is the right place for your family. Together, we can help students discover their God-given purpose and empower them to impact the world for Christ.

Blessings in Christ,



Tara Lee

Tara Lee, M.Ed.
Co-Founder & Chief Executive Officer





Educating and Empowering Passionate Disciples of Jesus Christ

GET TO KNOW CHESS CHRISTIAN SCHOOL

We offer a fully accredited, Christ-centered education that fosters academic excellence, sharpens minds, and softens hearts as students discover who God created them to be.

We are fully and dually accredited through the Association of Christian Teachers and Schools (ACTS), and Middle States Association, ensuring your child's education is recognized by universities nationally and globally.

Our learner-centered educational model balances thoughtful teacher intention with dynamic student engagement. At CHESS, we believe that such engagement allows for the best possible start for contagious learning. Research shows that learner-centered education enhances retention through active learning, increases motivation and ownership, supports diverse learning needs, and leads to greater academic success and emotional well-being.

2014

Established

433

Enrollment

100%

Graduation
Rate

161

Classes
Offered

WHERE ARE CHESS GRADUATES NOW?





Partnering with Parents to Strategically Match Students' God-Given Gifts with Creative Educational Opportunities

GET TO KNOW CHESS CHRISTIAN SCHOOL'S FIVE CORE VALUES

Since 2014, we have partnered with parents to offer a distinctive Christian education that empowers students to do the good works God prepared in advance for them to do. Our Five Core Values create a contagious learning community where not only your student, but your whole family will thrive.

Prepare for Success

Core Value: Transformative Future

At CHESS, we recognize that the future is unknown, the job market is rapidly changing, technology is advancing, and the Lord alone knows what tomorrow holds. Because of this, we strive to prepare students not only by teaching valuable content, but also by instilling in them the skills necessary to succeed: creative problem solving, critical thinking, and grit. However, we also recognize that even if your student attends CHESS from two years old through graduation, learns every assigned memory verse, and sings every chapel song, but never develops a relationship with Jesus and a heart transformed by the Gospel, then their future remains uncertain. We know that the key to a successful future is a life surrendered to our Heavenly Father and our goal is for every student who attends CHESS to leave changed by His grace.



Love to Learn

Core Value: Contagious Learning

Imagine your child thriving in a setting where learning is celebrated, mistakes are seen as opportunities for growth, and students become confident that they can do hard things. At CHESS, our educators are chosen not just for their expertise, but for their ability to bring subjects to life and create engaging learning environments where growth and understanding is the goal. Students are nurtured by teachers who remind them of the power of the word YET; even though they can't do something well right now, that only means they can't do it well YET. Learning becomes contagious as students understand that CHESS is a safe place to practice new skills.





Love Jesus

Core Value: Passionate Discipleship

Here, your child is seen, valued, and encouraged to explore and grow in their faith under the guidance of leaders who believe in developing the whole person—mind, body, and spirit. Teachers draw out your child's unique strengths, helping them discover who God created them to be and empowering them to impact the world for Christ. Biblical discussions aren't only encountered in Bible class. Our teachers bring Biblical truths to life across every subject and encourage students to seek the Lord in all things. It's not unusual to see teachers, administrators, or even students stop in the hall or classroom to pray and invite the Lord into situations they are facing.



The Best of Both Worlds

Core Value: Flexible Engagement

At CHESS, our unique hybrid model keeps you in the driver's seat of your student's education by giving you the freedom to decide how to best partner with us. You can choose to enroll your student in as many as four full-days of classes; you can choose just a few classes to complement your homeschool plan; or you can select as little as one class per school year while you homeschool your student in all other subjects. Our Academic and Administrative Teams provide accountability and support no matter which option you choose, while you stay an active partner in your child's education, overseeing at-home learning assignments and maintaining influence and involvement in your student's education.



More Than a School

Core Value: Christ-Centered Community

Step into a vibrant community where your entire family will be fully known and loved. Experience the joy of forming deep connections with like-minded friends and families who support you through every season of life. Here, through our many and varied community activities, your children will gain peers who strengthen and sharpen their faith and you'll meet other parents walking the same journey, ready to form lasting bonds. This is more than a school community; it's a family network bound by faith, where relationships flourish and endure well beyond graduation.





Grow Through *Diverse* Opportunities

CO-CURRICULAR ACTIVITIES

We see the value in stretching beyond academic boundaries to embrace new challenges and interests. Our extensive K-12 co-curricular offerings ensure that there's something for everyone. Whether it's engaging in team sports, serving the local community, or joining clubs that spark new interests, we aim to foster personal growth, teamwork, and the discovery of new passions.

Elementary	Middle School	High School
Student Ambassadors Cross Country Basketball Spirit Squad Royal Ropers Monthly Field Trips Service Projects	Student Ambassadors* LEGO League TNT** Cross Country Volleyball Soccer Basketball Royal Ropers Monthly Field Trips Service Projects	Student Ambassadors* Internships ACTS Honor Society TNT** Cross Country Volleyball Soccer Basketball Royal Ropers Monthly Field Trips Service Projects

*Powered by the Chick-fil-A Leader Academy

**An Adventure-Based Discipleship and Service Immersion Program

Want to know more about Sports or Co-curriculars?

Our team is excited to hear from you! Send us your questions at: info@chesschristian.com

"As a homeschool family, we love CHESS. It is helpful in supporting my goals of homeschooling and giving my kids all the aspects of education that a mainstream school doesn't provide. It's challenging and provides a very effective, individualized and unique way of preparing kids for their future in practical ways. Through CHESS, I'm offering my kids opportunities I never could have done on my own."



Matching Students' God-Given Gifts with Creative Educational Opportunities

Preschool: 2 Years-PreK

CHES Christian Preschool is a certified Wild School through the Department of Natural Resources, and follows the custom scope & sequence of the Growing Up Wild curriculum. We provide sensory-rich, nature-based play and learning, leaning heavily on social and emotional development, with Biblical principles and educational milestones woven throughout to ensure that students are growing academically.

Our preschool is state-licensed through the Ohio Department of Children & Youth. We offer flexible engagement over a 4-day school week at the level that meets your educational, financial, and familial needs. You can customize your child's class schedule to include morning classes only (8am-11:30am), or full day classes (8am-2:30pm). Your student can enroll for as little as one morning a week and up to 4 full days a week, with only our Tuesday/Thursday PreK Program requiring full day attendance.

Preschool Student Life

Spiritual Life

- Morning Prayer
- Bible Memory Work
- Classroom Worship

Traditions

- Apple Week
- Water Week
- Royal Expo
- Fall Parade
- Class Parties
- Nature Visits
- Christmas Expo
- Grandparents Day
- CHES Farm Visits

PER STUDENT FEE \$625

This fee covers a variety of administrative, facility, and student costs. This is a flat fee that applies to all students. This is not due at the time of application or enrollment, but will be included in your FACTS payment plan.

PRESCHOOL TUITION

- Preschool students can attend for any combination of four full days and mornings only.
- Preschool students who attend mornings only will be picked up at 11:30am and will not eat lunch at school.
- Pre-K T/TH Program requires full days.

One Full Day	\$2,771	One Morning	\$1,830
Two Full Days	\$4,652	Two Mornings	\$2,860
Three Full Days	\$6,534	Three Mornings	\$3,845
Four Full Days	\$8,415	Four Mornings	\$4,830

"Hudson is an active, fun-loving four year old boy who thrives at CHES preschool. He learns while not realizing it - all the while keeping him engaged and growing! He has easily made friends due to the environment of open play. The teachers have been a blessing. While guiding him, they show the love of Christ to the youngest of our society."





Elementary School: Kindergarten-4th Grade

For these early and foundational years, CHES offers Core classes that meet on Tuesdays and Thursdays. These Core classes include Math, Science, Language Arts, History, and Bible and are designed to foster a love for learning as well as a love for others. Between Kindergarten and 4th grade, each grade level of Core is taught by a single teacher in a self-contained classroom. Due to the nature of these classes and the structure of their days, students in K-4th who choose Core offerings must attend all Core classes.

We also offer a wide variety of Elective classes that meet on either Monday or Wednesday. These classes function as a holistic enrichment to your student's educational experience. Popular offerings have included cooking, STEM, coding, pottery, art, Spanish, music, PE, and many more. You can customize an Elective class schedule at any grade level.

CHES provides all the curriculum for the courses in which your student is enrolled. Instruction and assessments are provided in the classroom, and then, for Core classes and select Electives, coursework is assigned to complete at home under the guidance of a parent. CHES reserves Fridays for Immersion Experiences.

Elementary School Student Life

Rhythms & Traditions

- Apple Week
- Royal Expo
- Christmas Expo
- Field Trips
- Class Parties
- Daddy Daughter Dance

Elective Classes

- Nature Explorers
- Fun with Spanish
- Sensory Fundamentals
- Maker Lab
- Physical Education
- Future Ready
- Music/Art
- Coding
- STEM
- Cooking
- Life Skills
- Drama

PER STUDENT FEE \$625

This fee covers a variety of administrative, facility, and student costs. This is a flat fee that applies to all students. This is not due at the time of application or enrollment, but will be included in your FACTS payment plan.

K-4TH TUITION

- Core classes include Math, Science, Language Arts, History, and Bible.
- All K-4th grade Core students must attend all Core classes at CHES.
- K-4th grade Core classes meet 2 days a week on Tuesdays and Thursdays.
- K-4th grade Electives meet on Monday and Wednesday.
- Full Core level of enrollment meets the ODEW requirements for a complete education when a fine art and PE credit are completed at home.

Elective	Core	
	0	\$4,638
	1	\$5,016
	2	\$5,393
	3	\$5,771
	4	\$6,149
	5	\$6,526
	6	\$6,904
	7	\$7,282
	8	\$7,660
	9	\$8,037
	10	\$8,415

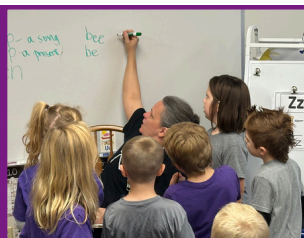
Enrichment Offerings

These programs are designed to help students go deeper in academics, leadership, and community.

DRAMA FEE \$105

STUDENT AMBASSADOR

*"I recommend CHES Christian School for too many reasons to list. Since attending CHES, we have seen our daughter **grow academically, physically and spiritually while making so many connections with friends and families that have the same values.** CHES is so much more than just a school."*





Middle School: 5th-8th grade

For these formative years, CHESS offers Tuesday and Thursday Core classes which include Math, Science, Language Arts, History, and Bible with a focus on developing creative problem solving and critical thinking skills while integrating Biblical truths. Beginning in 5th grade, you can customize your student's Core schedule. For example, if your student is homeschooling for most subjects, but you would like support in one subject, your student can enroll in just that one class. We offer supervised Independent Study during every period if your student needs to stay on campus between their scheduled classes.

CHESS also offers a wide variety of Middle School Elective classes that meet on either a Monday or a Wednesday. These classes function as a holistic enrichment to your student's educational experience. Popular offerings have included cooking, STEM, coding, pottery, typing, CPR, logic, and many more.

CHESS provides all the curriculum for the courses in which your student is enrolled. Instruction and assessments are provided in the classroom, and then, for Core classes and select Electives, coursework is assigned to complete at home under the guidance of a parent. CHESS reserves Fridays for Immersion Experiences.

Middle School - Student Life

Rhythms & Traditions

- Royal Expo
- Christmas Expo
- Middle School Dance
- Marmon Valley
- Field Trips
- Class Parties

Elective Classes

- Nature
- Worship Band
- Heart of a Warrior
- Captivating
- Physical Education
- Future Ready
- Music/Art
- Drama
- Coding
- Cooking
- Maker Lab
- Yearbook

PER STUDENT FEE \$625

This fee covers a variety of administrative, facility, and student costs. This is a flat fee that applies to all students. This is not due at the time of application or enrollment, but will be included in your FACTS payment plan.

5TH-8TH TUITION

- Core classes include Math, Science, Language Arts, History, and Bible.
- Core classes meet two times a week. Some 8th grade Science and Math classes require attendance at monthly or bi-weekly labs that may include an additional fee. See course descriptions for details.
- 5th-8th grade Electives meet on Monday and Wednesday.
- Full Core level of enrollment meets the ODEW requirements for a complete education when a fine art and PE credit are completed at home.

	Core					
	0	1	2	3	4	5
0		\$1,683	\$2,477	\$3,271	\$4,066	\$4,860
1	\$1,289	\$2,083	\$3,141	\$3,975	\$4,553	\$5,260
2	\$1,689	\$2,628	\$3,718	\$4,553	\$5,130	\$5,660
3	\$2,088	\$3,179	\$4,269	\$5,105	\$5,681	\$6,060
4	\$2,489	\$3,654	\$4,745	\$5,579	\$6,156	\$6,460
5	\$2,889	\$4,040	\$5,130	\$5,964	\$6,541	\$6,859
6	\$3,288	\$4,412	\$5,501	\$6,337	\$6,645	\$7,260
7	\$3,688	\$4,776	\$5,868	\$6,645	\$6,866	\$7,660
8	\$4,088	\$4,882	\$5,676	\$6,471	\$7,265	\$8,059
9	\$4,488	\$5,282	\$6,077	\$6,871	\$7,665	\$8,460
10	\$4,888	\$5,683	\$6,477	\$7,271	\$8,064	\$8,859

Enrichment Offerings & Lab Fees

These programs are designed to help students go deeper in academics, leadership, and community.

MATH LABS SCIENCE LABS

See course description for pricing.

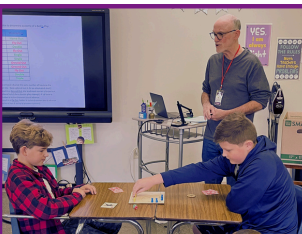
HONORS ENGLISH \$105

DRAMA FEE \$105

TNT PROGRAM \$186

STUDENT AMBASSADOR

"This is our first year at the school and so far my kids are really loving it. The teachers are knowledgeable, very kind, and really engaged. You can tell that they really care about their student's mental and spiritual learning. As a previous homeschool parent, I am loving the balance and all the family time we get while our kids are learning and making connections. Finding this school was definitely an answer to my prayers!"





High School: 9th-12th grade

At this pivotal stage, our Tuesday and Thursday Core offerings support students spiritually, academically, and socially. Classes are designed to stretch students' abilities in critical thinking, creativity, and collaboration. These Core classes include Math, Science, Language Arts, History, and Bible. Schedules can be customized to include just one Core class to as many as all five. We offer supervised Independent Study during every period if your student needs to stay on campus between their scheduled classes.

Additionally, students can explore their interests and talents through our Monday or Wednesday Elective courses, enrichment classes, and required Math and Science Labs. These classes supplement our Core classes to support and exceed Ohio graduation requirements. Popular offerings have included career planning, coding, pottery, yearbook, health and CPR, financial planning, worship band, and many more.

CHES provides all the curriculum for the courses in which your student is enrolled. Instruction and standardized assessments are provided in the classroom, and then, for Core classes and select Electives, coursework is assigned to complete at home under the guidance of a parent. CHES reserves Fridays for Immersion Experiences.

High School - Student Life

Rhythms & Traditions

- Royal Expo
- Christmas Expo
- Homecoming/Prom
- Senior Trip
- Field Trips
- Class Parties

Elective Classes

- Health
- Career Planning
- Financial Planning
- Heart of a Warrior
- Captivating
- Worship Band
- Art
- Yearbook

Enrichment

- Honors English
- Spanish 1 & 2
- Internships

PER STUDENT FEE \$625

This fee covers a variety of administrative, facility, and student costs. This is a flat fee that applies to all students. This is not due at the time of application or enrollment, but will be included in your FACTS payment plan.

9TH-12TH TUITION

- Core classes include Math, Science, Language Arts, History, and Bible.
- Core classes meet two times a week. Some High School Science and Math classes require attendance at monthly or bi-weekly labs that include an additional fee. See course descriptions for details.
- Most Electives meet one time a week on Monday.
- Spanish 1 and 2 meet on Monday
- Wednesday Makerspace is available to High School students who have a gap in their schedule. \$300/year.
- Students who participate in College Credit Plus take college courses and receive dual-credit at CHES. The CHES Academic Advisor provides transcript support, scheduling, and advising as students take college courses as part of their 4-year high school plan.

	Core						
Elective		0	1	2	3	4	5
	0		\$1,683	\$2,477	\$3,271	\$4,066	\$4,860
	1	\$1,289	\$2,083	\$3,141	\$3,975	\$4,553	\$5,260
	2	\$1,689	\$2,628	\$3,718	\$4,553	\$5,130	\$5,660
	3	\$2,088	\$3,179	\$4,269	\$5,105	\$5,681	\$6,060
	4	\$2,489	\$3,654	\$4,745	\$5,579	\$6,156	\$6,460
	5	\$2,889	\$4,040	\$5,130	\$5,964	\$6,541	\$6,859
	6	\$3,288	\$4,412	\$5,501	\$6,337	\$6,645	\$7,260

Enrichment Offerings & Lab Fees

These programs are designed to help students go deeper in academics, leadership, and community.

MATH LABS SCIENCE LABS <small>See course description for pricing.</small>	
HONORS ENGLISH	\$105
DRAMA FEE	\$105
CCP FEE	\$150
TNT PROGRAM	\$532
STUDENT AMBASSADOR	

"Our family has been part of CHES Christian since its second year, and we absolutely love it! Both of my sons graduated from CHES and are thriving. The school prepares students for success through a college-style schedule that fosters independence, discipline, and learning from a biblical worldview. We also cherish the wonderful community here, which has helped my boys discover their unique gifts. I highly recommend the Career Planning class. We are truly grateful that God led us to CHES!"





Invest in Your Student's Education

AFFORDABLE TUITION

We believe every family should have the opportunity to offer their child a comprehensive Christian education. This commitment to accessibility is why our tuition remains exceptionally flexible and affordable.

As partners in your child's education, we're here to support you in all aspects, including navigating the financial portion. Our flexible tuition payment plans are designed to fit diverse family needs. We're also available to assist you in exploring scholarship opportunities, ensuring that a quality Christian education is within reach for your child.

Application Fees		Additional Offerings	
RE-ENROLLMENT FEE (returning students).	\$130 until Jan. 30th \$198 beginning Jan. 31st	MAP GROWTH STANDARDIZED TESTING (included if your student is taking Language Arts and/or Math at CHESS).....	\$150
APPLICATION FEE (all new students).....	\$198	AFTER-CARE	\$8/student from 2:45-3:30pm (2:45-3:30PM, 3:31-4:30PM*).....\$10/student from 3:31-4:30pm
FAMILY CAP.....	\$490 until Jan. 30th \$640 beginning Jan. 31st	*Late fees apply for pickup after 4:30 pm	

Financial Notes

Payment plans can begin in June, allowing for a 12-month payment schedule. You may also choose to pay tuition in full or divide payment into 2 semi-annual payments. A tuition calculator can be found on our website.

ENROLLMENT & COURSE SELECTIONS ARE A FULL SCHOOL YEAR COMMITMENT. Your commitment is finalized & billed based on course requests on record on May 8, 2025. New course requests made beginning May 9, 2025 become your commitment for enrollment & are billed accordingly at the date of your course request.

[Click here to access our tuition calculator.](#)



Discounts & Financial Aid

Multi-Child Discount

CHESS offers a 3rd child 5% tuition discount, 4th child 10% tuition discount, and 5th child+ 15% tuition discount. Multi-Child discounts are discounted at the student level (NOT the family). The highest discount applies to the student enrolled at the lowest tuition rate, and the lowest discount applies to the student enrolled at the highest rate.

Apply for Scholarship Support

For the 2024-25 school year we awarded over \$10,000 in scholarships from private donors in our community through OCEN. Applications for scholarships for the 2025-26 school year are now open and due in March of 2025. You can complete your student's scholarship application at <https://ohiocen.org/ocen-sgo/apply>. Recipients will be notified in April of 2025. CHESS does not currently accept the Ohio EdChoice Scholarship.



Tuition payments are managed through FACTS Tuition Management.
<https://online.factsmgt.com/login/4K839>



Department of
Education &
Workforce

Department of
Children & Youth



Ready TO GET STARTED?

ADMISSIONS INFORMATION

Getting Started is Easy

- 1 Visit Us
[SCHEDULE YOUR TOUR -->](#)
- 2 Submit Your Application
- 3 Complete Entrance Testing
- 4 Attend a Family Interview
- 5 Receive Letter of Decision
- 6 Finalize Enrollment

Key Admission Dates

Early Application Period -- Oct. 8 - Nov. 15

Open Enrollment Begins -- Jan. 30th

Decision letters will be emailed by the Admissions Specialist upon acceptance. The application process typically takes 2-4 weeks to complete before receiving a decision letter. Once a letter of acceptance has been sent, parents must respond by completing enrollment within 10 days to claim the available open seat. After enrollment is complete, you will be able to make course selections for your child.

Still have questions about Admissions?

Our Admissions Specialist is eager to help!
You can email Celeste O'Toole at cotoole@chesschristian.com.

"CHESS Christian School has been a wonderful experience for our family! The supportive and flexible environment has made it easy for our children to thrive. We truly appreciate the faith-based curriculum that aligns with our values and the way the school partners with parents to ensure every child's success. The close-knit community creates lasting friendships, and we can't say enough about the amazing teachers and administration. They are dedicated, caring, and always willing to go the extra mile. Highly recommend CHESS Christian School!"



Experience Our Community in Action

TAKE THE NEXT STEP

We invite you and your child to come visit our campus to experience the CHES Christian community firsthand.



Open House

Join us for a night of fun where the whole family will learn more about CHES! Experience engaging activities, a building tour, an overview of our hybrid model, and face-to-face time with teachers, administrators and staff at informative mini-sessions that will help you know what to expect when your student enrolls at CHES.



More Than a School

Schedule a private tour of CHES Christian School to learn more about our core values, vision and mission, and view our campus. We'll discuss specific grade programs, learning opportunities, and answer any questions you may have. Come learn about CHES and what we have to offer!



The Best of Both Worlds

At CHES Christian School, we aim to cultivate a collaborative and innovative learning environment. Would you like to meet our dedicated faculty and staff? Would your student benefit from experiencing a class or connecting with current CHES students? Join us at one of our Age & Stage Admissions events to experience CHES in action!



ADMISSIONS

You're invited
to join us for an
Admissions Event

FEB 7TH KINDER CAMP

FEB 20TH EARLY ELEMENTARY
EXPERIENCE
&
ESTABLISHED ELEMENTARY
EXPERIENCE

MAR 20TH HIGH SCHOOL COFFEE &
CONVERSATIONS

MAR 27TH MIDDLE SCHOOL
SPOT LIGHT

APR 4TH KINDER CAMP

APR 24TH EARLY ELEMENTARY
EXPERIENCE
&
ESTABLISHED
ELEMENTARY EXPERIENCE

"My son has struggled with traditional public school's education model. We love this school's ability to teach quality, relevant material that doesn't contradict our Christian beliefs. No where have we found a teaching and admin staff that work wholeheartedly for the betterment of each individual child, regardless of his/her unique mental or academic needs. Their discipleship programs are enticing and sports offerings growing every year. So grateful to have CHES as a local, highly affordable Christian school option."



Empower Your Student for Impact

A Message From Admissions

At CHESS, we aim to help students discover who God created them to be as they are empowered to impact the world for Christ. Through our Christ-centered community and contagious learning environments, students at every grade level are prepared for the future by learning to think critically, solve problems creatively, and love the Lord deeply.

I pray that this guide helps you envision a future where your child is known, supported, and equipped to cultivate that love for the Lord and for learning. Our Academic and Administrative Team is here to support you in every way as your student is transformed into a passionate disciple of Christ. While you maintain influence over your student's education and the flexibility to choose the level of engagement that is best for your family, we offer ourselves as an extension of your home and church, partnering with you to prepare your student to do the good works God prepared in advance for him or her to do.

If you're searching for a school that will support you and your child academically and spiritually, schedule a tour with us today.

I look forward to meeting you and your family.

Sincerely,



Celeste O'Toole

Celeste O'Toole
Admissions Specialist
cotoole@chesschristian.com
937-203-8011

Your Private Tour Includes:

- ✓ A walking tour of the entire campus (Preschool and K-12), with a special emphasis on your child's grade level
- ✓ Time to get all of your questions answered
- ✓ An information packet so your family can make your decision with confidence

[SCHEDULE YOUR PRIVATE TOUR](#) ➤

"We love sending our son to CHESS. The families and staff are wonderful. When you walk through the door you can feel that the people here (including the students) genuinely love God and are following Him in their daily lives. This is a wonderful fit for those who want the best of home schooling and the best of a brick and mortar experience."